

S.W. 1/4  
**SECTION 27, T.7N.,R.1W., S.L.B. & M.**

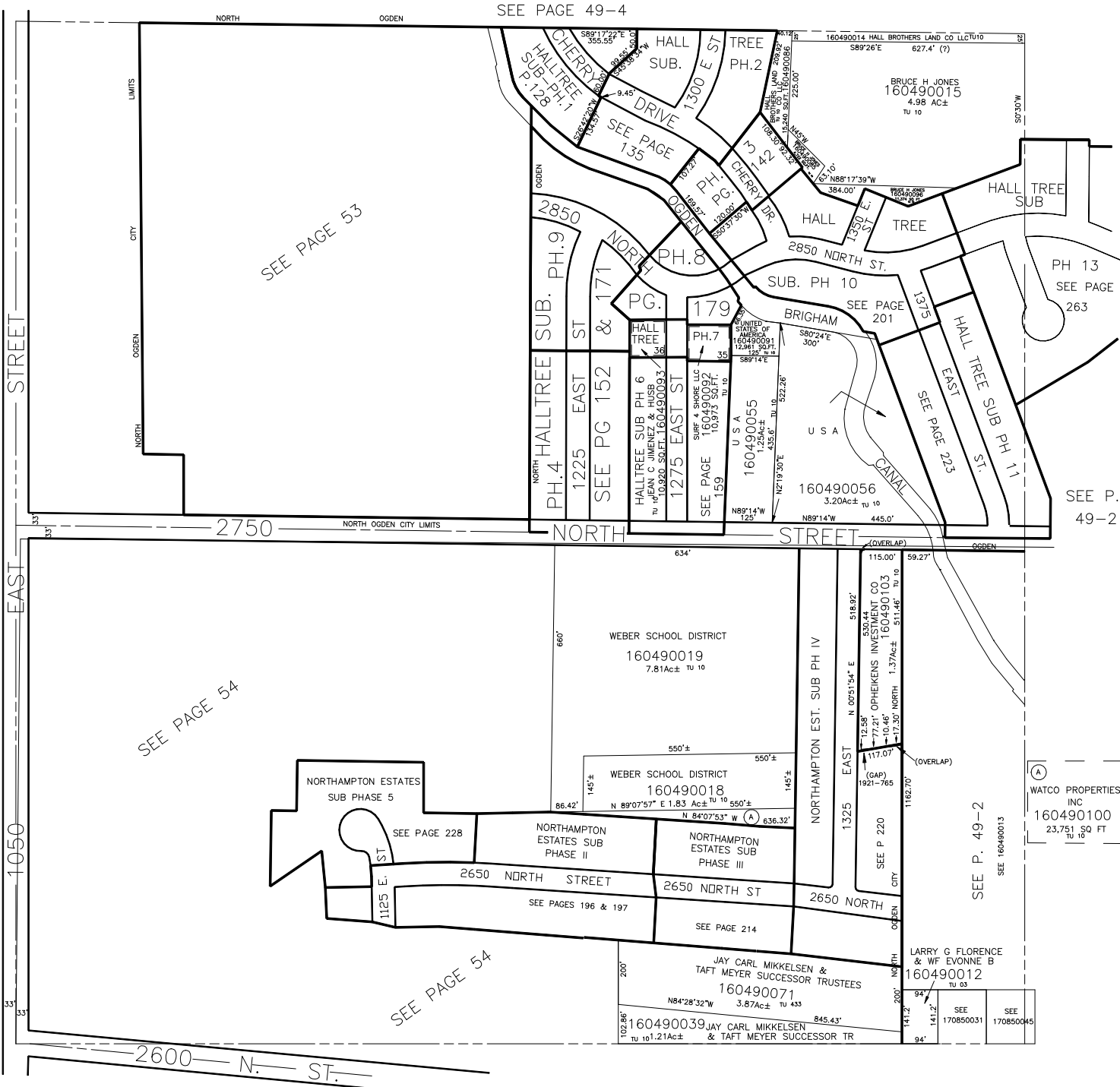
49-3

IN NORTH OGDEN CITY & NORTH OGDEN DISTRICT

TAXING UNIT: 10, 433

SCALE 1" = 200'

ALSO SEE PAGE 49-4



SEE BOOK  
 17  
 PAGE 1

SEE PAGE 53

SEE PAGE 54

SEE PAGE 54

SEE PAGE 49-4

SEE P.  
 49-2